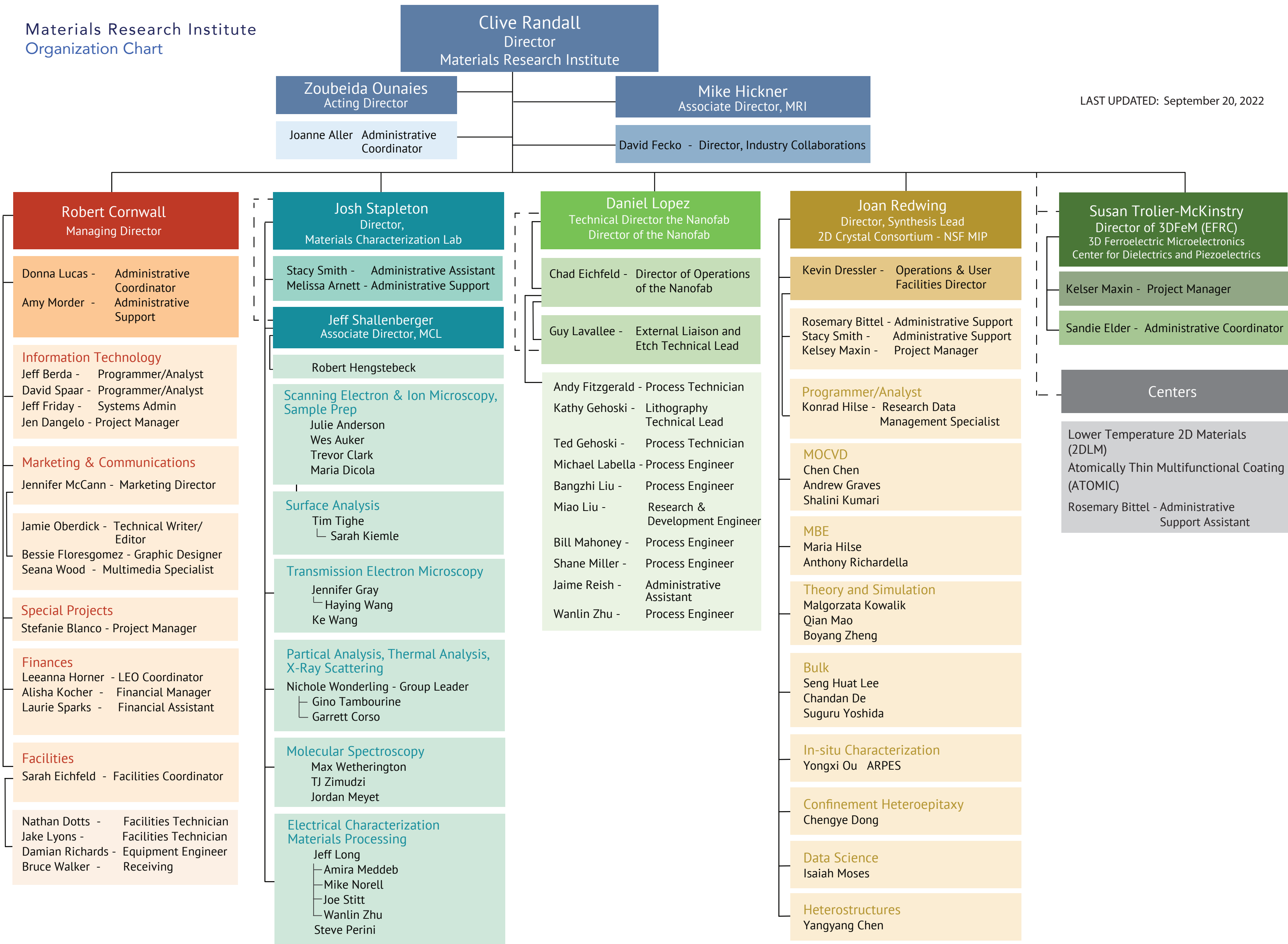


Materials Research Institute Organization Chart

LAST UPDATED: September 20, 2022



Robert Cornwall
Managing Director

Donna Lucas - Administrative Coordinator
Amy Morder - Administrative Support

Information Technology
Jeff Berda - Programmer/Analyst
David Spaar - Programmer/Analyst
Jeff Friday - Systems Admin
Jen Dangelo - Project Manager

Marketing & Communications
Jennifer McCann - Marketing Director

Jamie Oberdick - Technical Writer/Editor
Bessie Floresgomez - Graphic Designer
Seana Wood - Multimedia Specialist

Special Projects
Stefanie Blanco - Project Manager

Finances
Leeanna Horner - LEO Coordinator
Alisha Kocher - Financial Manager
Laurie Sparks - Financial Assistant

Facilities
Sarah Eichfeld - Facilities Coordinator

Nathan Dotts - Facilities Technician
Jake Lyons - Facilities Technician
Damian Richards - Equipment Engineer
Bruce Walker - Receiving

Josh Stapleton
Director,
Materials Characterization Lab

Stacy Smith - Administrative Assistant
Melissa Arnett - Administrative Support

Jeff Shallenberger
Associate Director, MCL

Robert Hengstebeck

**Scanning Electron & Ion Microscopy,
Sample Prep**
Julie Anderson
Wes Auker
Trevor Clark
Maria Dicola

Surface Analysis
Tim Tighe
└ Sarah Kiemle

Transmission Electron Microscopy
Jennifer Gray
└ Haying Wang
Ke Wang

**Partical Analysis, Thermal Analysis,
X-Ray Scattering**
Nichole Wonderling - Group Leader
└ Gino Tambourine
└ Garrett Corso

Molecular Spectroscopy
Max Wetherington
TJ Zimudzi
Jordan Meyet

**Electrical Characterization
Materials Processing**
Jeff Long
└ Amira Meddeb
└ Mike Norell
└ Joe Stitt
└ Wanlin Zhu
Steve Perini

Daniel Lopez
Technical Director the Nanofab
Director of the Nanofab

Chad Eichfeld - Director of Operations
of the Nanofab

Guy Lavallee - External Liaison and
Etch Technical Lead

Andy Fitzgerald - Process Technician
Kathy Gehoski - Lithography
Technical Lead
Ted Gehoski - Process Technician
Michael Labella - Process Engineer
Bangzhi Liu - Process Engineer
Miao Liu - Research &
Development Engineer
Bill Mahoney - Process Engineer
Shane Miller - Process Engineer
Jaime Reish - Administrative
Assistant
Wanlin Zhu - Process Engineer

Joan Redwing
Director, Synthesis Lead
2D Crystal Consortium - NSF MIP

Kevin Dressler - Operations & User
Facilities Director

Rosemary Bittel - Administrative Support
Stacy Smith - Administrative Support
Kelsey Maxin - Project Manager

Programmer/Analyst
Konrad Hilse - Research Data
Management Specialist

MOCVD
Chen Chen
Andrew Graves
Shalini Kumari

MBE
Maria Hilse
Anthony Richardella

Theory and Simulation
Malgorzata Kowalik
Qian Mao
Boyang Zheng

Bulk
Seng Huat Lee
Chandan De
Suguru Yoshida

In-situ Characterization
Yongxi Ou ARPES

Confinement Heteroepitaxy
Chengye Dong

Data Science
Isaiah Moses

Heterostructures
Yangyang Chen

Susan Trolier-McKinstry
Director of 3DFeM (EFRC)
3D Ferroelectric Microelectronics
Center for Dielectrics and Piezoelectrics

Kelser Maxin - Project Manager

Sandie Elder - Administrative Coordinator

Centers

Lower Temperature 2D Materials
(2DLM)
Atomically Thin Multifunctional Coating
(ATOMIC)
Rosemary Bittel - Administrative
Support Assistant