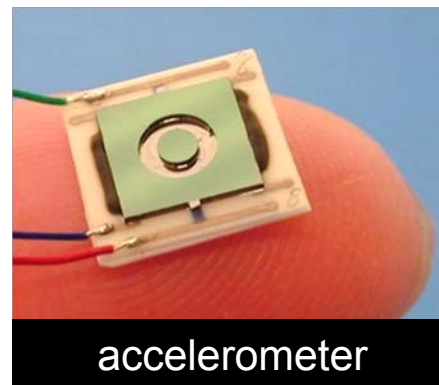
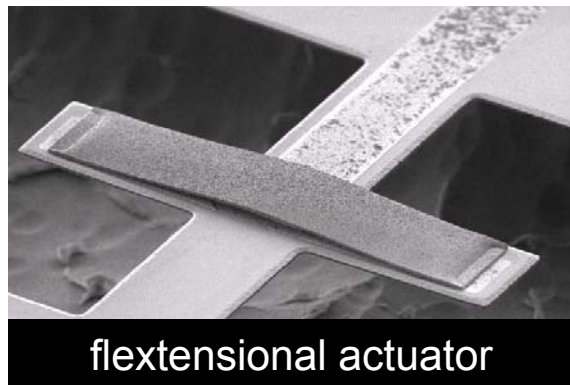
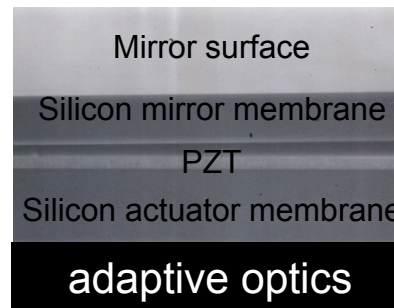
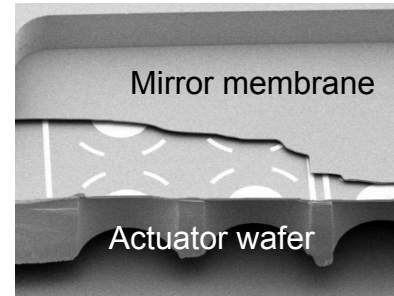
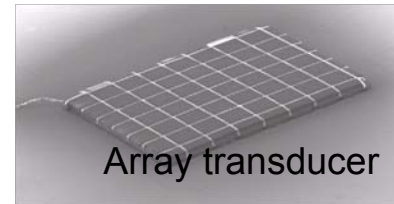
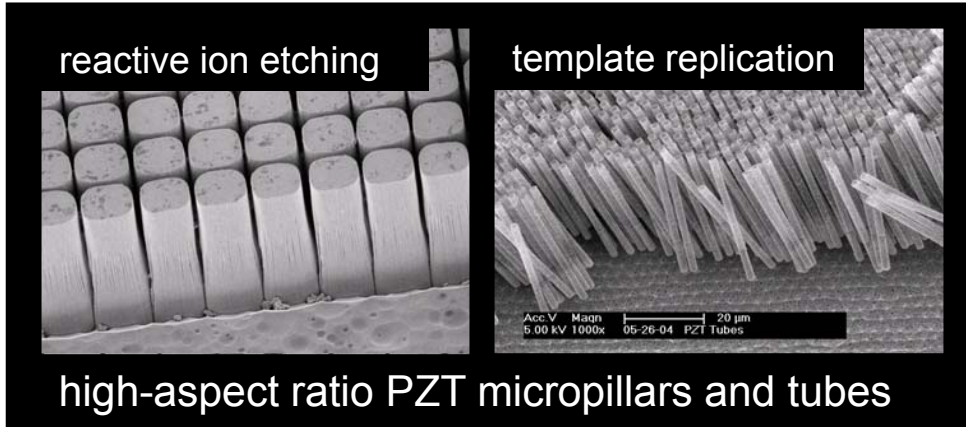


# Examples of Complex Oxide Device Integration

S. Trolier-McKinstry, *Keck Smart Materials Laboratory and Center for Dielectric Studies, Penn State University, University Park*



Fabricated devices in collaboration with Northrop Grumman, Geospace Research, Wilcoxon Research, Jet Propulsion Lab, and Army Research Lab

e.g., Bharadwaja *et al.*, *J. Am. Ceramic Soc.* 89(9) 2695 (2006), Yang *et al.*, *J. MEMS* 15(5) 1214 (2006), Hong *et al.*, *J. MEMS* 15(4) 832 (2006).

Examples of integrating piezoelectric and pyroelectric thin films into microelectromechanical systems and electro-optic devices