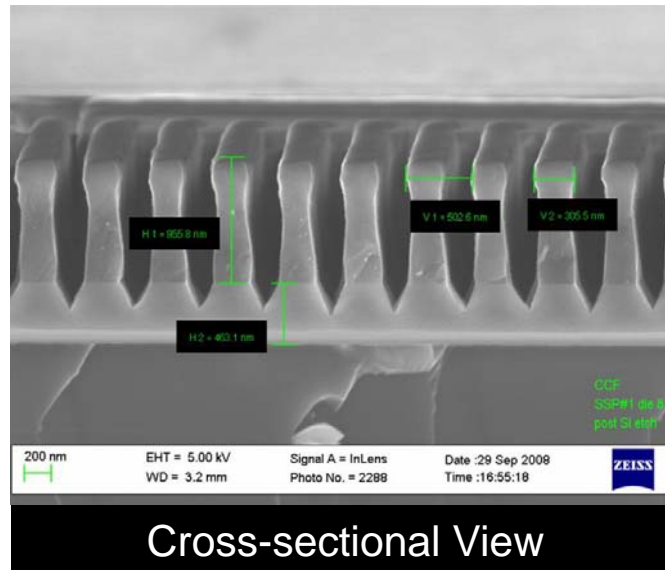
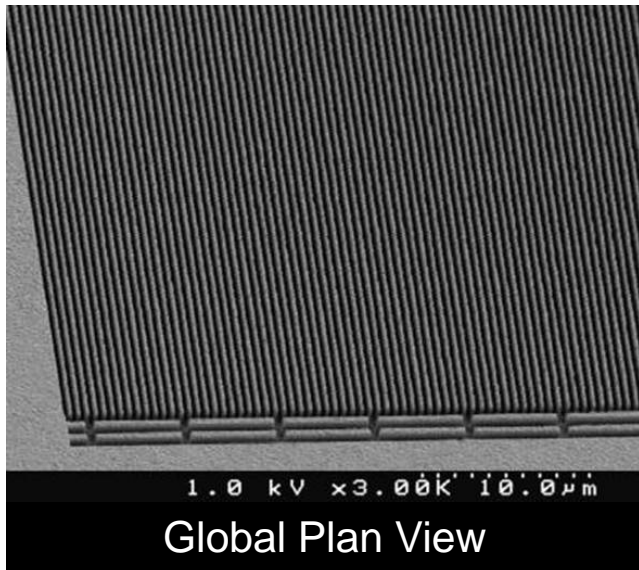


Silicon Nanoporous Membranes

Dr. Shuvo Roy, PI, Bioengineering & Therapeutic Sciences, *University of California, San Francisco*
Dr. Aaron Fleischman, Biomedical Engineering, *Cleveland Clinic*
Ken Goldman, CTO, *H-Cubed, Inc.*



Patterned polysilicon layer for construction of hemofiltration membranes.

Project funded by NIH through a Quantum Grant for the development of an implantable artificial kidney

The PSU Nanofab has enabled a 10x increase in pore density (porosity) from first generation membranes, enabling device miniaturization for potential human implementation. Further process enhancements at the Nanofab could increase porosity an additional 5x.

For additional information, please contact Shuvo Roy (shuvo.roy@ucsf.edu)